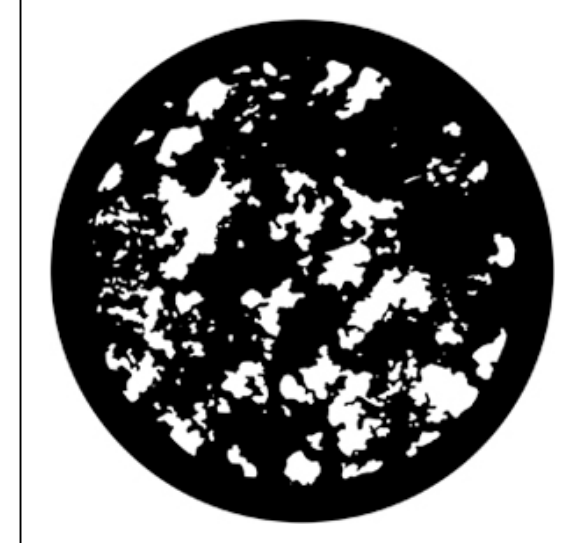
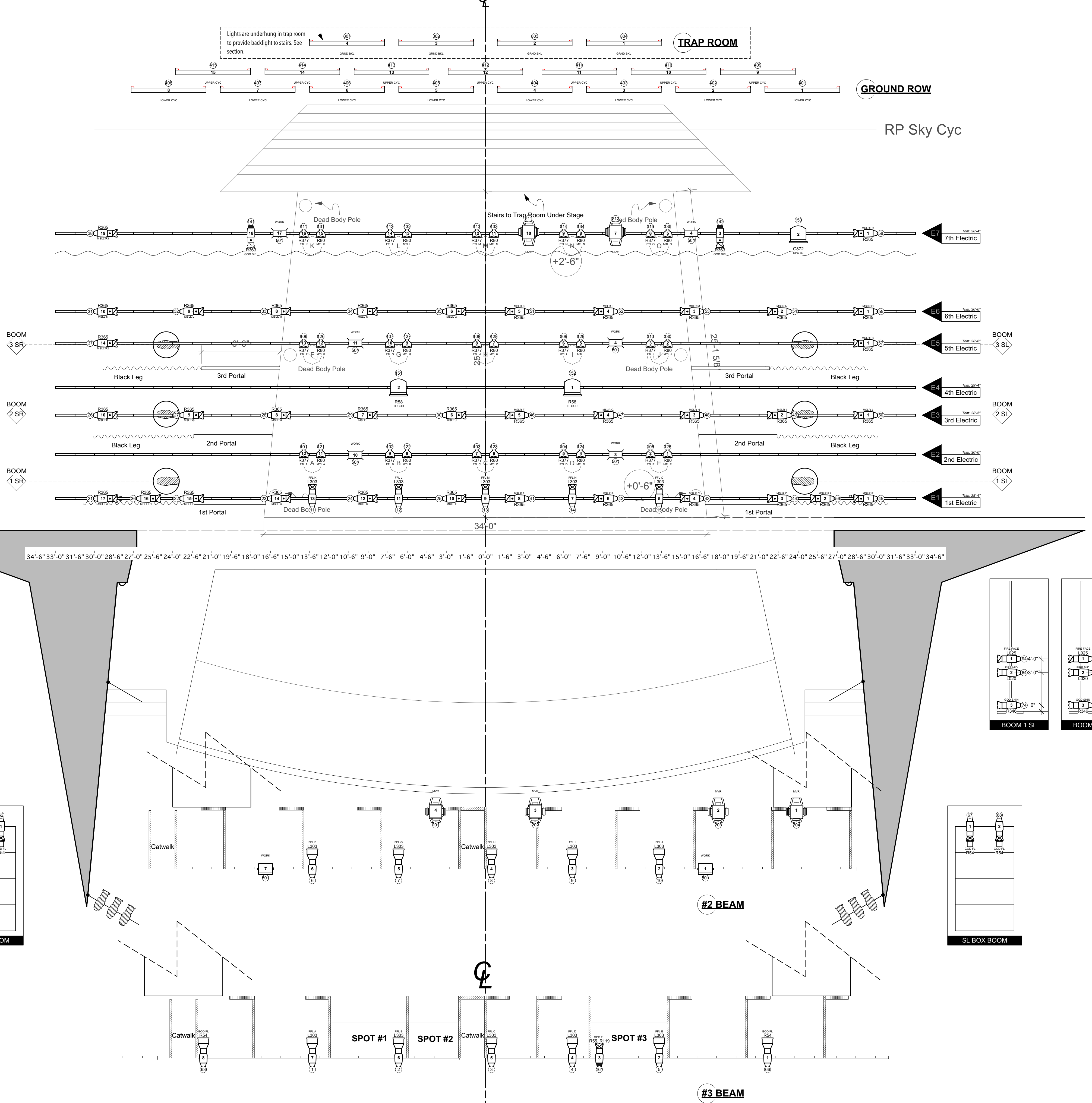


D TO PL	DESCRIPTION	TRIM	#
37'-11.5"			55
36'-11.5"			54
35'-4"			53
34'-2" 83/32"			52
33'-4" 84/32"			51
32'-11.5" 84/32"			50
30'-2" 60/8"			49
30'-11.25" 57/2"	RP Sky Cyc	0'-0"	47
30'-3.25" 59/2"			46
29'-11.5" 59/2"			45
29'-7" 57/2"			44
27'-11"	SHELL CEILING #3		
26'-11.25" 60/2"			43
26'-5.5" 60/2"			42
26'-0.75" 57/2"			41
25'-4.5" 57/2"			40
25'-0" 60/2"			39
24'-2.5" 60/2"			38
24'-2" 60/2"			37
23'-5.5" 60/2"	7th Electric	28'-4"	36
23'-0" 60/2"			35
22'-4" 60/2"			34
22'-0.75" 57/2"			33
21'-5.5" 60/2"	1st Border	28'-2"	32
21'-0" 60/2"			31
20'-4" 60/2"			30
20'-11" 60/2"			29
18'-0"	SHELL CEILING #2		
17'-0" 60/2"	6th Electric	30'-0"	28
16'-4" 60/2"			27
16'-0" 60/2"			26
14'-6.75" 57/2"	5th Electric	28'-6"	25
14'-1" 60/2"			24
13'-4" 60/2"			23
12'-11.75" 60/2"	R3 Portal Eros and Black Leg		22
12'-6" 60/2"			21
12'-1.5" 60/2"			20
11'-7" 60/2"	4th Electric	29'-4"	19
11'-2" 60/2"			18
10'-6" 60/2"			17
10'-3.25" 60/2"			16
9'-6" 60/2"	3rd Electric	28'-5"	15
9'-0" 60/2"			14
7'-7.5"	SHELL CEILING #1		
6'-6.25" 60/2"	R2 Portal Eros and Black Leg		12
6'-0" 60/2"			11
5'-4" 60/2"			10
5'-0" 60/2"			9
4'-8" 60/2"			8
3'-11" 60/2"			7
3'-1.5" 60/2"	1st Electric	28'-4"	6
2'-7" 60/2"	1st Portal + Black Legs		5
2'-1.75" 60/2"			4
1'-9" 60/2"			3
1'-3.5"	HOUSE CURTAIN		2
0'-7.5" 84/10"	FIRE CURTAIN	19'-0"	1

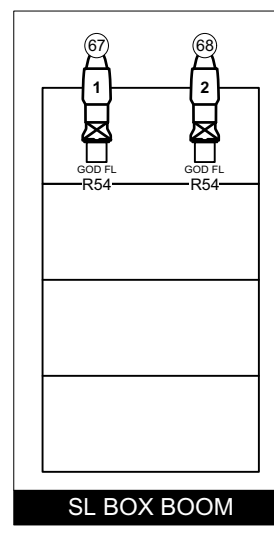
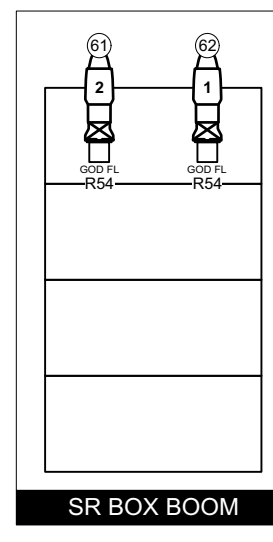
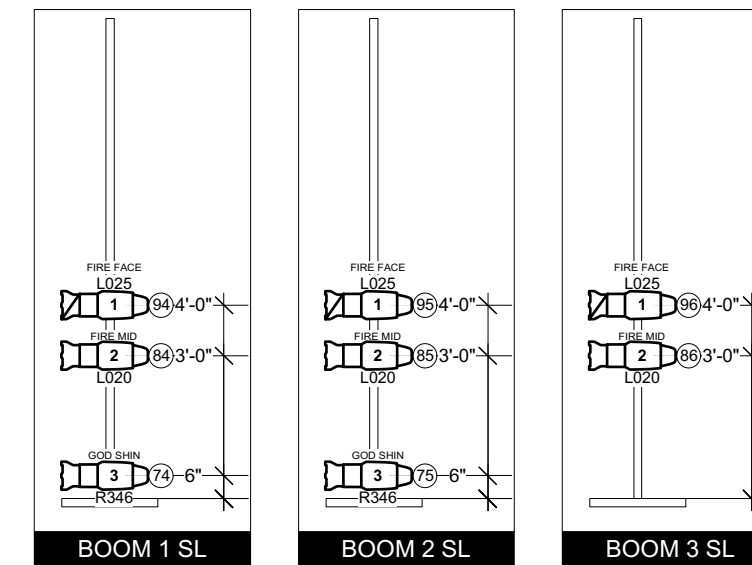
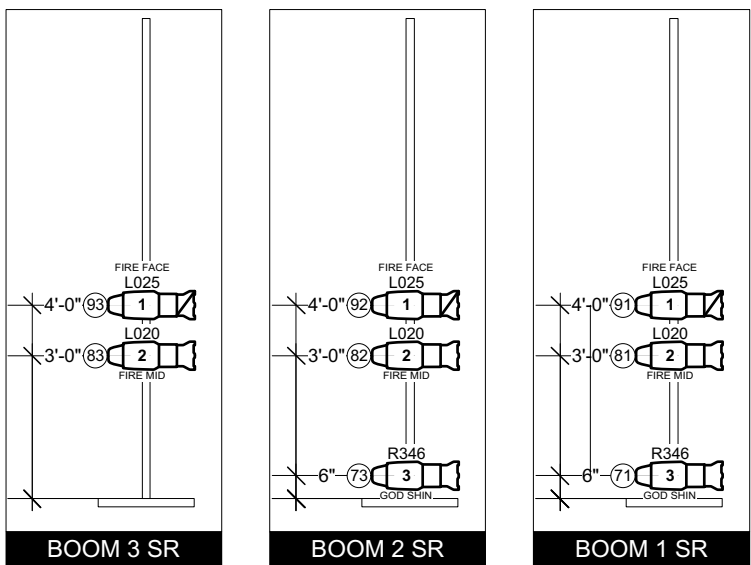


- INSTRUMENT KEY**
- ETC Source 4 10° 575w
 - ETC Source 4 19° 575w
 - ETC Source 4 26° 575w
 - ETC Source 4 36° 575w
 - ETC Source 4 26° 750w
 - ETC Source 4 36° 750w
 - ETC Source 4 PAR WFL 575w
 - Accessory 6.25in Top Hat
 - Colortran 12" Fresnel 5kW
 - HighEnd SolaFrame 2000 950w
 - Elation Colour Chorus 72 630w

- LEGEND**
- F ON T
- Color
 - Unit #
 - Channel
- S I D E
- Channel
 - Unit #
 - Color

- NOTES**
- PURPOSE NOTES:**
Most purposes give purpose acronym and focus area
- Acronyms Key:**
FFL = Fire Front Light
MSLR = Monologue Side Light Cross Right
MSLL = Monologue Side Light Cross Left
FLL = Fire Top Light
MTL = Monologue Top Light
P1/P2/P3 = Dead Body Poles
- GENERAL NOTES:**
All booms must be a minimum of 6 feet
AquaFogger or equivalent Dry Ice Fog Machine will be set for DS coverage
Radiance Hazer will be placed at Mid-Gal

DISCLAIMER
This drawing represents visual concepts and construction suggestions. It does not replace the knowledge and advice of a licensed structural engineer. The designer is unqualified to determine the structural appropriateness of this design and shall not assume responsibility for improper engineering or use.



THE TROJAN WOMEN
LIGHTING DESIGN BY ANDREW STEWART
PRODUCED BY JIM GAGE
RLD: Jim Gage | RME: Greg Falcone

GROUND PLAN
Scale: 1/4" = 1'-0"
Revision: Final Plot

PLATE
1 OF 2

DRAFTED BY **AFS** 2/6/19
UNIVERSITY OF CINCINNATI
College-Conservatory of Music
CORBETT AUDITORIUM **CCM**

AS ANDREW STEWART
Lighting Design
stewartlight.com